



Visit our home page at [magneshade.com](http://magneshade.com) for a 10 minute installation video link to [youtube.com](http://youtube.com)

**!!!WARNING!!! Read BEFORE handling magnets!**

If you wear a pace maker or defibrillator—**DO NOT HANDLE**—maintain distance of 18" from magnets!

THE NEODYMIUM MAGNETS WE INCLUDE FOR INSTALLATION ARE VERY STRONG. HANDLING THEM WITH CARE IS NECESSARY TO PREVENT PERSONAL INJURIES, PROPERTY DAMAGES AND MAGNET DAMAGES...

- NEODYMIUM MAGNETS ARE BRITTLE; THEY CAN BE BROKEN, CHIPPED, OR CAN SPLINTER IN A COLLISION.
- SLIDE ONE MAGNET OFF THE STACK AT A TIME AND REST THE MAGNETS AT LEAST 36" AWAY FROM REMAINING STACK.
- KEEP MAGNETS AWAY FROM SENSITIVE ELECTRONICS.
- KEEP MAGNETS AWAY FROM CHILDREN.

**INSTALLATION DIAGRAM**

\*WINDSHIELD MAGNETS ARE TO BE APPLIED TO THE INTERIOR SIDE OF THE WINDSHIELD\*

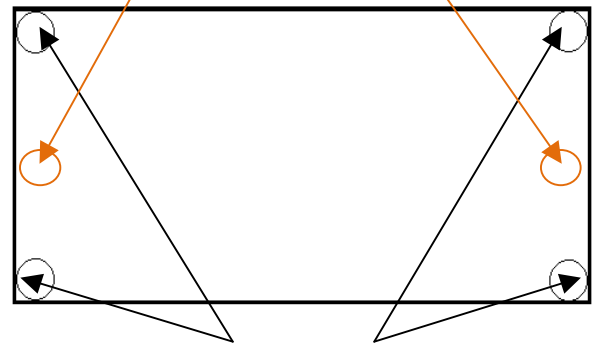
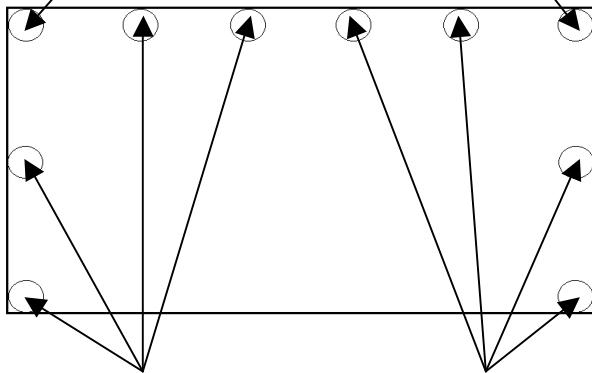
\*BOUND POCKETS FACE OUTWARD\*

Class A Windshield

Class C Windshield

Use magnet package "A" in upper corner

Sprinter chassis requires center side magnets

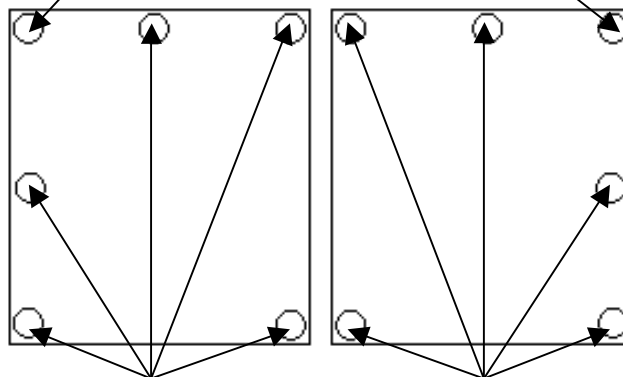


Use magnet package "B" in these locations

Use magnet package "B" in all locations

Class A Windshield – 2 panel set

Use magnet package "A" in upper outside corners



Use magnet package "B" in these locations

## INSTALLATION INSTRUCTIONS

**READ MAGNET SAFETY WARNINGS** BEFORE OPENING OR WORKING WITH YOUR MAGNETS!

- Check contents for shades
- Remove and identify magnet pkgs A, B
- Clean the interior perimeter of the windshield with a 50/50 water to rubbing alcohol mix and let dry

### **1** Dry Fitting the Magne Shade – 2 people required, one person inside and one person outside (In this step DO NOT remove the adhesive backing)

- One person will hold the shade up to the glass on the outside of the windshield.
- Inside, starting with the center magnets, the other person will remove one magnet from package at a time and carefully let it attract to a corresponding magnet sewn into the pocket of the shade; adhesive should be facing glass.  
**hold tight as it may jump from your hands!** *\*it may be helpful to line magnets up 5 inches apart on the bottom of a cookie sheet and slide them off as needed*
- Repeat this step until the shade is being held solely by the magnets. *\*if you are installing magnets in a tight spot it may be helpful to place the magnets on the tip of a butter knife so that you can place them correctly*
- Adjust the Magne Shade top to bottom and left to right smoothing the fabric so it lays on the windshield snugly.
- Let the shade relax in the sun to eliminate the fold marks from being rolled.

### **2** Permanently installing your Magne Shade interior magnets (In this step you may now remove the adhesive backing)

*\*for exterior helper- work the upper magnets to the top of the pocket before the interior magnet is permanently applied and smooth the shade fabric as you move outward.*

- Once satisfied with the adjustments, beginning with an upper center magnet, remove and permanently apply one magnet at a time.
- Repeat this until all of the interior magnets are mounted. Once this is done leave the shade attached for an hour or so, letting the adhesive bond to the glass.
- You are now finished with the installation. You may review the video on our website [www.magneshade.com](http://www.magneshade.com) to see the technique for installing your Magne Shade every time you use it.

### **3** Tips and care for your Magne Shade

- When storing your shade, it *should always be rolled* so that the magnets DO NOT repel each other. Magnets can lose magnetic force over time if two magnets oppose each other with the same magnetic pole. The bound pockets should always be rolled on the outside. **NEVER FOLD YOUR SHADES!**
- Rolling your Magne Shade around a swimming noodle can keep pockets from stacking and shade fabric from creasing while stored. *\*especially recommended with printed shades*
- Do NOT use “slick treatments” on your windshield where magnet pockets rest. The Magne Shade system requires friction between the glass and the shade fabric. Slick treatments may reduce the necessary friction.
- Iron ore dust can accumulate on the pockets in the West; if too much accumulates it will act as a friction reducer. Keeping pockets clean can make installation easier.
- Occasionally clean the front and back of your shades with a soft brush and mild detergent.
- Digitally printed shades require extra care. Though these are printed in very high quality, they can be scratched, never slide the pockets when unrolling the shade, always pull the pockets straight away to unroll them.

### HOW TO ADJUST YOUR MAGNE SHADE AFTER INSTALLATION

After you install the Magne Shade on your windshield follow these tips to smooth out any wrinkles.

- Insert the rod into one of the upper corner pockets, adjust the tension by bumping the rod with the palm of your hand upward and outward at a 45 degree angle.
- To adjust the lower corners grasp the corner pocket firmly and tug outward and downward at a 45 degree angle.

Repeat on the opposite side of the windshield.

If the interior windshield magnets were initially installed correctly, then your shades will be easily adjusted for a great fit each time